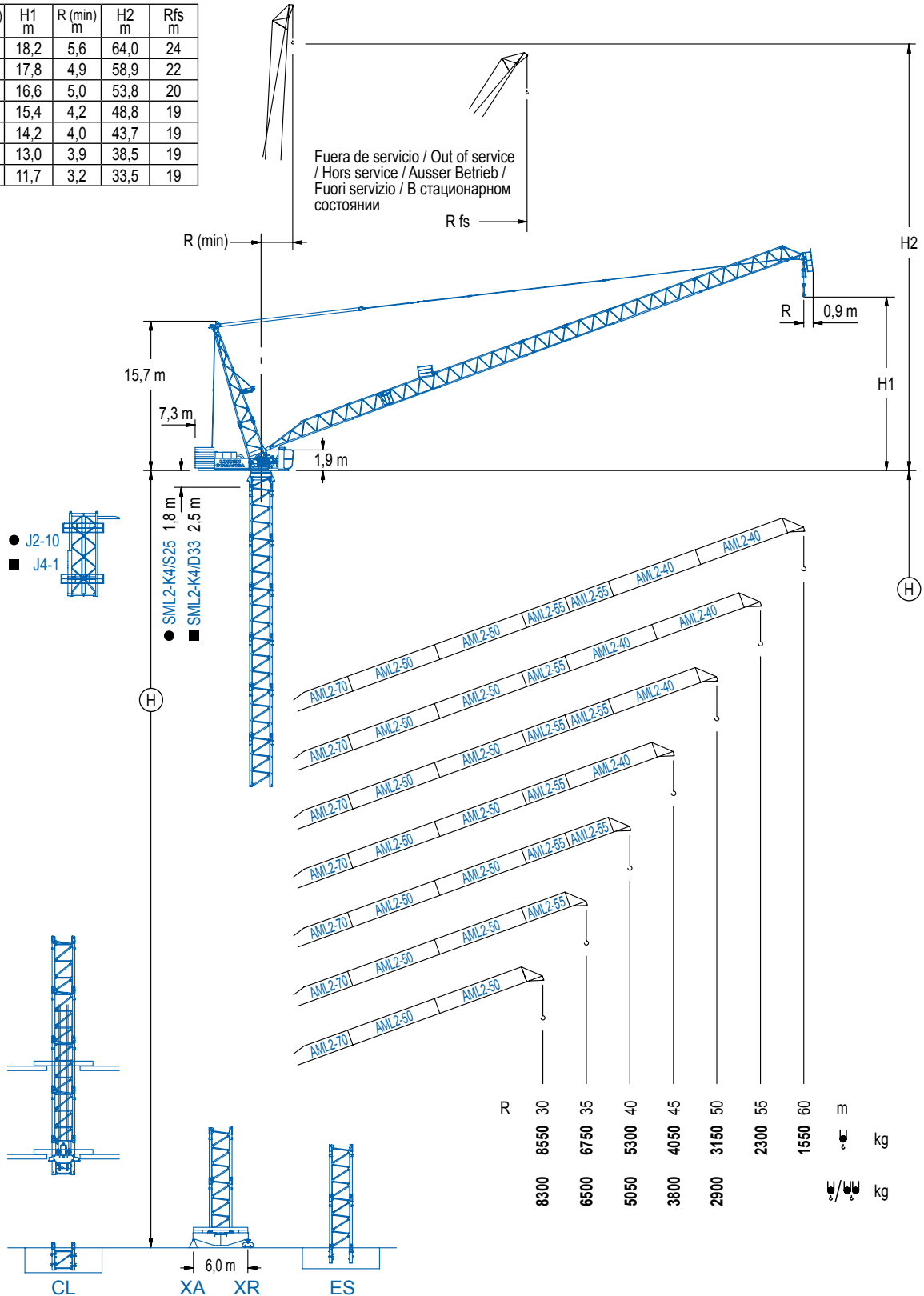


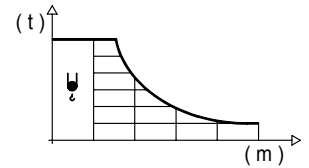
| R (max)<br>m | H1<br>m | R (min)<br>m | H2<br>m | Rfs<br>m |
|--------------|---------|--------------|---------|----------|
| 60           | 18,2    | 5,6          | 64,0    | 24       |
| 55           | 17,8    | 4,9          | 58,9    | 22       |
| 50           | 16,6    | 5,0          | 53,8    | 20       |
| 45           | 15,4    | 4,2          | 48,8    | 19       |
| 40           | 14,2    | 4,0          | 43,7    | 19       |
| 35           | 13,0    | 3,9          | 38,5    | 19       |
| 30           | 11,7    | 3,2          | 33,5    | 19       |



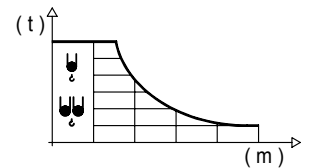
## DIAGRAMA DE CARGAS

Load chart / Diagramme de charges / Lastdiagramm / Diagramma di carico / Диаграмма распределения нагрузки

| R (m) | ψ | RCmax (m) | 10 | 15 | 20   | 25   | 30   | 35   | 40   | 45   | 50   | 55   | 60   | ↔(m)<br>↓(kg) |
|-------|---|-----------|----|----|------|------|------|------|------|------|------|------|------|---------------|
| 60    |   | 23,5      |    |    | 9000 | 7910 | 5550 | 4200 | 3310 | 2690 | 2220 | 1860 | 1550 |               |
| 55    |   | 24,8      |    |    | 9000 | 8870 | 6430 | 4970 | 3990 | 3280 | 2740 | 2300 |      |               |
| 50    |   | 25,9      |    |    |      | 9000 | 7110 | 5580 | 4540 | 3760 | 3150 |      |      |               |
| 45    |   | 27,2      |    |    |      |      | 9000 | 7710 | 6070 | 4920 | 4050 |      |      |               |
| 40    |   | 27,7      |    |    |      |      |      | 9000 | 8040 | 6460 | 5300 |      |      |               |
| 35    |   | 28,8      |    |    |      |      |      |      | 9000 | 8490 | 6750 |      |      |               |
| 30    |   | 29,0      |    |    |      |      |      |      |      | 9000 | 8550 |      |      |               |

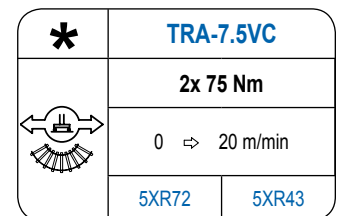
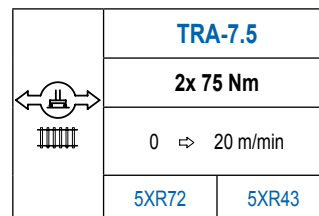
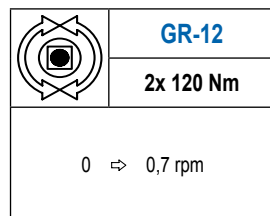
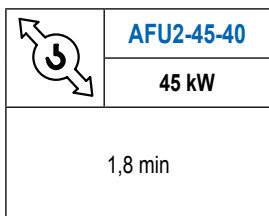
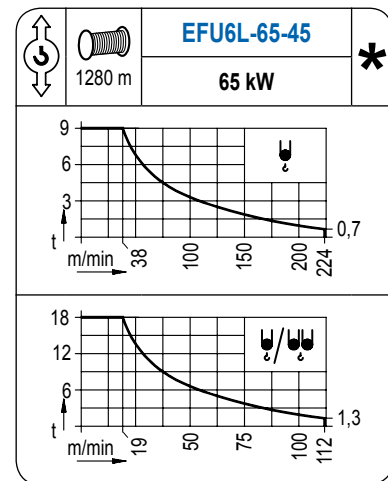
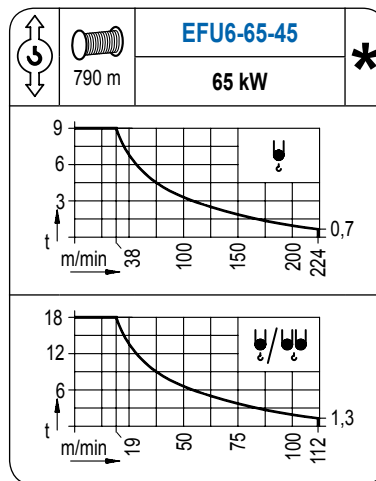
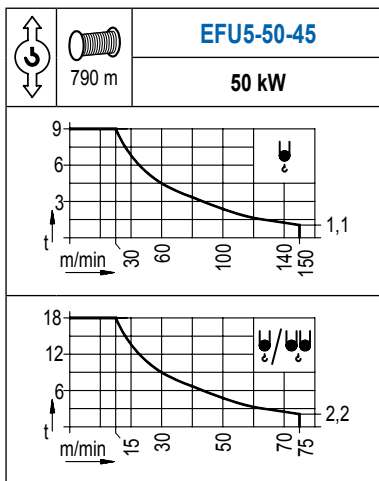


| R (m) | ψ/ψψ | RCmax (m) | 10    | 15    | 20    | 25    | 30   | 35   | 40   | 45   | 50   | 55 | 60 | ↔(m)<br>↓(kg) |
|-------|------|-----------|-------|-------|-------|-------|------|------|------|------|------|----|----|---------------|
| 50    |      | 12,3      | 18000 | 13720 | 9430  | 7100  | 5640 | 4640 | 3910 | 3350 | 2900 |    |    |               |
| 45    |      | 11,7      | 18000 | 13530 | 9750  | 7560  | 6130 | 5130 | 4380 | 3800 |      |    |    |               |
| 40    |      | 13,5      | 18000 | 15890 | 11370 | 8780  | 7100 | 5930 | 5050 |      |      |    |    |               |
| 35    |      | 15,0      |       | 18000 | 12720 | 9750  | 7840 | 6500 |      |      |      |    |    |               |
| 30    |      | 16,5      |       | 18000 | 14010 | 10530 | 8300 |      |      |      |      |    |    |               |



## MECANISMOS

Mechanisms / Mécanismes / Antriebe / Meccanismi / Механизмы



| POTENCIA / POWER / PUISSANCE / LEISTUNG / POTENZA / МОЩНОСТЬ             |  |  |   | Tensión de alimentación / Operating voltage / Tension de service / Betriebsspannung / Tensione di alimentazione / Напряжение источника питания |   |
|--|--|--|---|--|---|
| Elevación / Hoist / Levage / Hub / Sollevamento / Тип механизма (подъем) | Abatimiento / Luffing / Releage / Einziehen / Brandeggio / Складывание | Giro / Slewing / Rotation / Drehbewegung / Rotazione / Поворот | Traslación / Travel / Translation / Verfahrbewegung / Traslazione / Ход | 400 V  | Generador / Generator / Générateur / Generator / Generatore / Генератор |
| EFU5-50-45   | AFU2-45-40   | (2x) GR-12   | (2x) TRA-7.5  | 3ph  | 225 kVA   |
| EFU6-65-45   |  |  |   | 250 kVA  |   |
| EFU6L-65-45  |  |  |   | 250 kVA  |   |

Opcional / Optional / En option / Kaufoption / Opzionale / Опционально

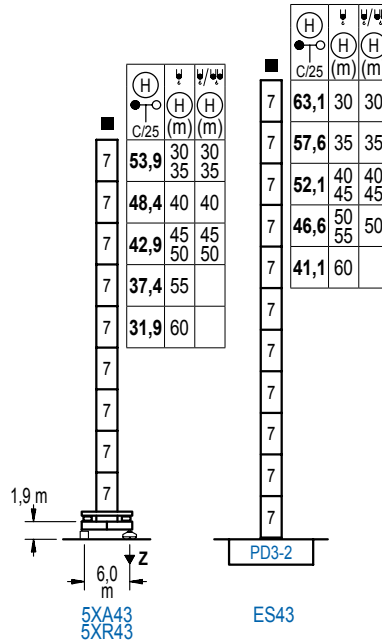
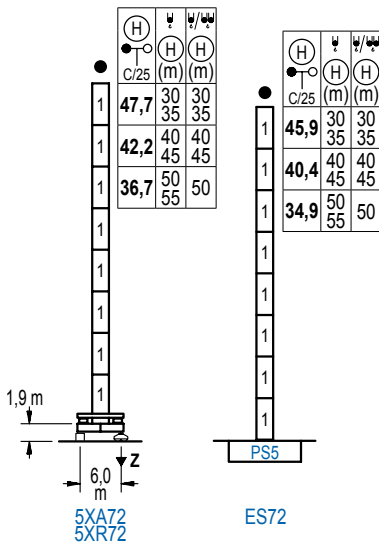
\*

## ALTURAS DE TORRE

Tower height / Hauteurs de tour / Turmhöhen  $\varnothing$  2,0 m  
/ Altezza della torre / Высота башни

## ALTURAS DE TORRE

Tower height / Hauteurs de tour / Turmhöhen  $\varnothing$  2,5 m  
/ Altezza della torre / Высота башни

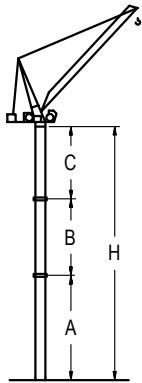


| nº | Ref. | φ   | h   |
|----|------|-----|-----|
| 1  | S25  | 2,0 | 5,5 |
| 7  | D33  | 2,5 | 5,5 |

| Z máx. | En servicio / In operation / En service / In Betrieb / In servizio / При работе                                | 5XR72.....111 t<br>5XR43.....119 t |
|--------|--|------------------------------------|
| Z máx. | Fuera de servicio / Out of service / Hors service / Ausser Betrieb / Fuori servizio / В стационарном состоянии | 5XR72.....144 t<br>5XR43.....167 t |

## GRÚA ARRIOSTRADA

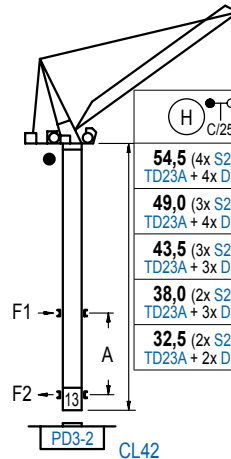
Braced crane / Grue à entretoisement / Abgespannter Kran / Gru ancorata / Нарастиваемый кран



Alturas de arriostramiento consultar / Height of tie frames on request / Hauteurs d'ancrages a demande / Höhe der Abspannungen auf Anfrage / Per altezze d'ancoraggio consultare il fabbricante / Проконсультируйтесь по высотам привязки к зданию

## GRÚA TREPADORA

Internal climbing crane / Grue avec cage de télescopage intérieure / Kran mit klettern im Gebäude / Gru in rampante in cavedio / Монтажная клеть



| nº | Ref.   | φ   | h   |
|----|--------|-----|-----|
| 1  | S25    | 2,0 | 5,5 |
| 2  | TD23A  | 2,0 | 5,5 |
| 4  | D23A   | 2,0 | 5,5 |
| 13 | CLD23A | 2,0 | 3,1 |

Otras zonas de viento, alturas superiores, arriostramientos o trepado interno consultar / Other wind zones, additional hook heights, tie frames or internal climbing on request / Autres zones de vent, des hauteurs supplémentaires, entretoisements ou grues avec cage de télescopage intérieure, sur demande / Andere Windzonen, weitere Hakenhöhen, Abspannungen zum Gebäude oder Klettern im Gebäude auf Anfrage / Per zone con velocità del vento particolari, altezze superiori, ancoraggi o rampante in cavedio, consultare il fabbricante / При других ветренных зонах, при большой высоте, привязках к зданию или наращивании крана внутри здания проконсультируйтесь с нами



# LINDEN COMANSA

Construcciones Metálicas COMANSA S. A.

Tel.: (34) 948 335 020 / Fax: (34) 948 330 810

e-mail: info@comansa.com / www.comansa.com

Polígono Urbizkain

E-31620 HUARTE-PAMPLONA.- SPAIN

DS.1308.26

02/13

LCL190/18 t

